



64041

International BANK NOTES

Published monthly by the Personnel Division, International Bank
for Reconstruction and Development, Washington 25, D.C.

Vol. 12, Nos. 1, 2

January, February 1958



Weighing Corn in Panama

IN THIS ISSUE:

	Page
PANAMA—The Storage Silo	3
General Trainees	6
New Professional Staff	10

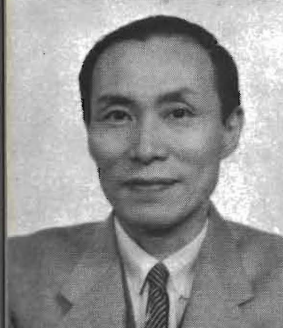
NEW PROFESSIONAL STAFF—November-December



Melvin S. Lord, from Bethpage, Missouri, joined the I.F.C. in November. His professional experience includes 6 years as Engineer and Assistant General Manager, Manufacturing Division, Armstrong Cork Company, Palamos, Spain. From 1946 to 1948 he was Vice President of Three Crowns Industries, Inc., Pottstown, Pa., and from 1948 to 1952 was Vice President and General Manager, Royal Hickman, Ltd., Tampa, Florida. Before joining our staff Mr. Lord was General Representative for Pennsalt International Corporation in Spain and later in South America. Mr. and Mrs. Lord have three children, Mary Elizabeth, John and Mary Carmen.



John A. McCunniff, American, was born in Sydney, Australia. He became a member of the Department of Technical Operations in November. For thirteen years he was with the California Public Utilities Commission. Before coming to the Bank he was Staff Transportation Rate Expert for that Commission in charge of the Hearing and Tariff Sections of the Rate Branch. This latter work was interrupted for one year when Mr. McCunniff acted as consultant in cost accounting systems, transport rates and regulatory legislation in Thailand for the I.C.A. and in the Philippines for Stanford Research Institute. Mr. and Mrs. McCunniff and daughter Betty are making their home in Sleepy Hollow, Virginia.



Sen Matsuda, from Tokyo, joined the Department of Operations—Far East in December. Mr. Matsuda was an adviser to the department chief of the Foreign Relations Department, The Bank of Japan, from 1950 until joining our staff. His professional experience has included being financial adviser in the Economic and Scientific Section, Allied Headquarters, Tokyo, from 1946 to 1950; officer in the Policy Formation Department, Bank of Tokyo for one year; and researcher, The Institute of Financial History in the Tokyo Imperial University. Mr. and Mrs. Matsuda have rented an apartment in northwest Washington.



Stanley Nehmer, from New York City, became a member of the Economic Staff in December. Before coming to the Bank Mr. Nehmer was an economist with the Department of State for 12 years, serving as Chief, Agricultural Raw Materials Branch. He also served for 2 years as Chief, Iron and Steel Branch, and for 5 years as Chief, Industry and Trade Section, Division of Research for Far East. Mr. Nehmer attended City College of New York and received his master's degree from Columbia University. Mr. and Mrs. Nehmer, daughter Sheryl and son Jonathan, live in Takoma Park, Md.